

# FOOD SERVICES AT ISLAND HEALTH

## Start your Career in Food Services

This is your opportunity to be a part of a diverse team while providing care in an interesting and unique way. We have kitchens in many health care facilities across the island which encompasses long term and acute care hospitals. Come make a difference and join the Island Health Team today!



## About Island Health

People make our organization. Health care attracts smart, caring individuals who want to make a difference and help people. No matter what area of health care you are in, our multi-disciplinary teams work together to provide the best care to our patients and residents. At Island Health we believe our values guide our actions and relationships, shaping how we make decisions and plan for the future. Our vision is, "Excellent health and care for everyone, everywhere, every time".

## Why Food Service at Island Health?

**Flexibility** - Our roles are casual which means you choose what hours work for you. We have a variety of shift options to suit your lifestyle. Maybe you want to be home for your kids after school, or you're an early riser and enjoy mornings, we can work with you to find what you are looking for. Interested for more hours? We welcome requests to pick up extra shifts. Working the equivalent of full-time hours could make you eligible for benefits.

**Variety** - Working in food services is never boring and your day will be full of diverse tasks and activities. With a variety of locations and facilities from acute care to residential services, you'll get to experience a number of different settings.

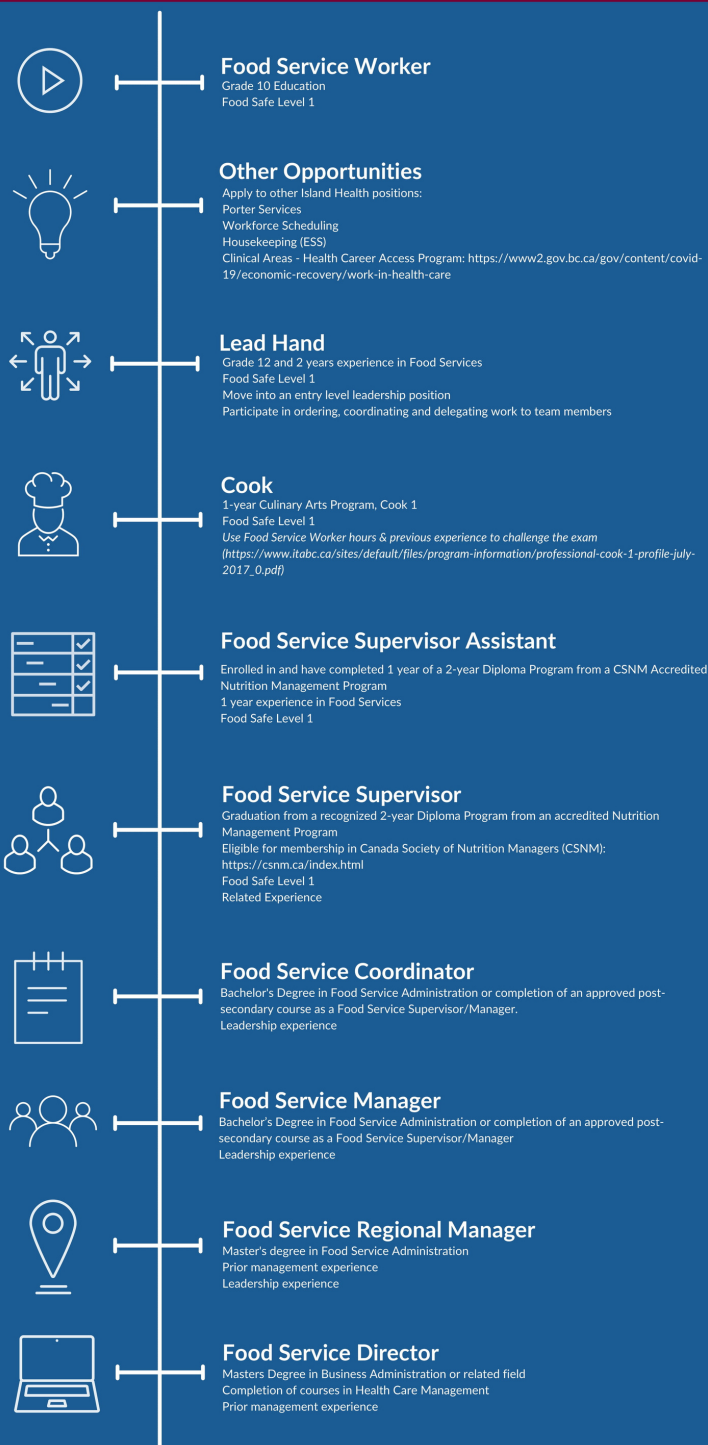
**Growth and Development** - We offer training & educational opportunities through union-funded financial incentives & Island Health scholarships to help you grow your skills to develop in your career. Check out our journey map below.



Get in touch with our Recruiters by emailing us at [Talentacquisition@islandhealth.ca](mailto:Talentacquisition@islandhealth.ca)

[islandhealth.ca/careers](https://islandhealth.ca/careers)

# FOOD SERVICES JOURNEY MAP



Funding Opportunities:  
HEU Bursary: <https://www.heu.org/bursaries>  
BCGEU Scholarship: [https://www.bcegu.ca/2021+bcgeu\\_scholarships](https://www.bcegu.ca/2021+bcgeu_scholarships)  
Island Health Scholarship:  
<https://intranet.islandhealth.ca/education/scholarships/Pages/default.aspx>  
FBA Education Fund: <https://www.heu.org/fba-education-fund#:~:text=The%20FBA%20Education%20Fund%20is%20a%20health%20care,members%20covered%20by%20the%20facilities%20sector%20collective%20agreement>

Are you a Food Service worker wanting to explore other career paths at Island Health? Career options are Island wide and include Environmental Service Worker, Scheduling Clerk, Patient or Material Porter, Health Care Assistant and more!

## TERRITORIAL ACKNOWLEDGEMENT

Island Health acknowledges with respect and humility the Coast Salish, Nuu-chah-nulth and Kwakwaka'wakw People on whose unceded traditional territories we offer our services and programs. We are committed to identifying and addressing the historical and ongoing health impacts of colonization and Indigenous specific racism to promote a culturally safe work environment.